

Instructions to Create a Cloth Mask for Hospital Use

Duckbill Style Face Mask LARGE

Size: Large (Teenagers/Adults)

This face mask was designed with affordability and washability in mind. It is reusable and stylish. It cups under the chin and over the nose bridge without the help of metal wires.

This is not a medical/surgical grade face mask, but it is good enough to protect the lower part of your face from dust particles and some odors.

Recommended Fabrics:

Gore-Tex is breathable and water repellent/waterproof. Some Micro-Fiber Taffeta fabrics are breathable and water repellent/waterproof. Please check manufacturers instructions. It is best to test the breathability of the fabrics on your face before buying/cutting.

Spraying fabric with waterproofing spray is not recommended because of the close proximity of the chemicals next to your respiratory system.

Inner and lining fabrics such as cotton, double gauze and any fabrics with absorbing properties are the best choices, as well as creating a layer for you to breathe.

The instructions given on the pattern pieces are for making a 2 layered mask. If you require a 3 layered mask, just cut 2 extra pieces of your chosen fabric/filter/lining for pattern piece 1. In the video tutorials I sometimes make it 2 layers, but most times it is 3 layers for extra protection.

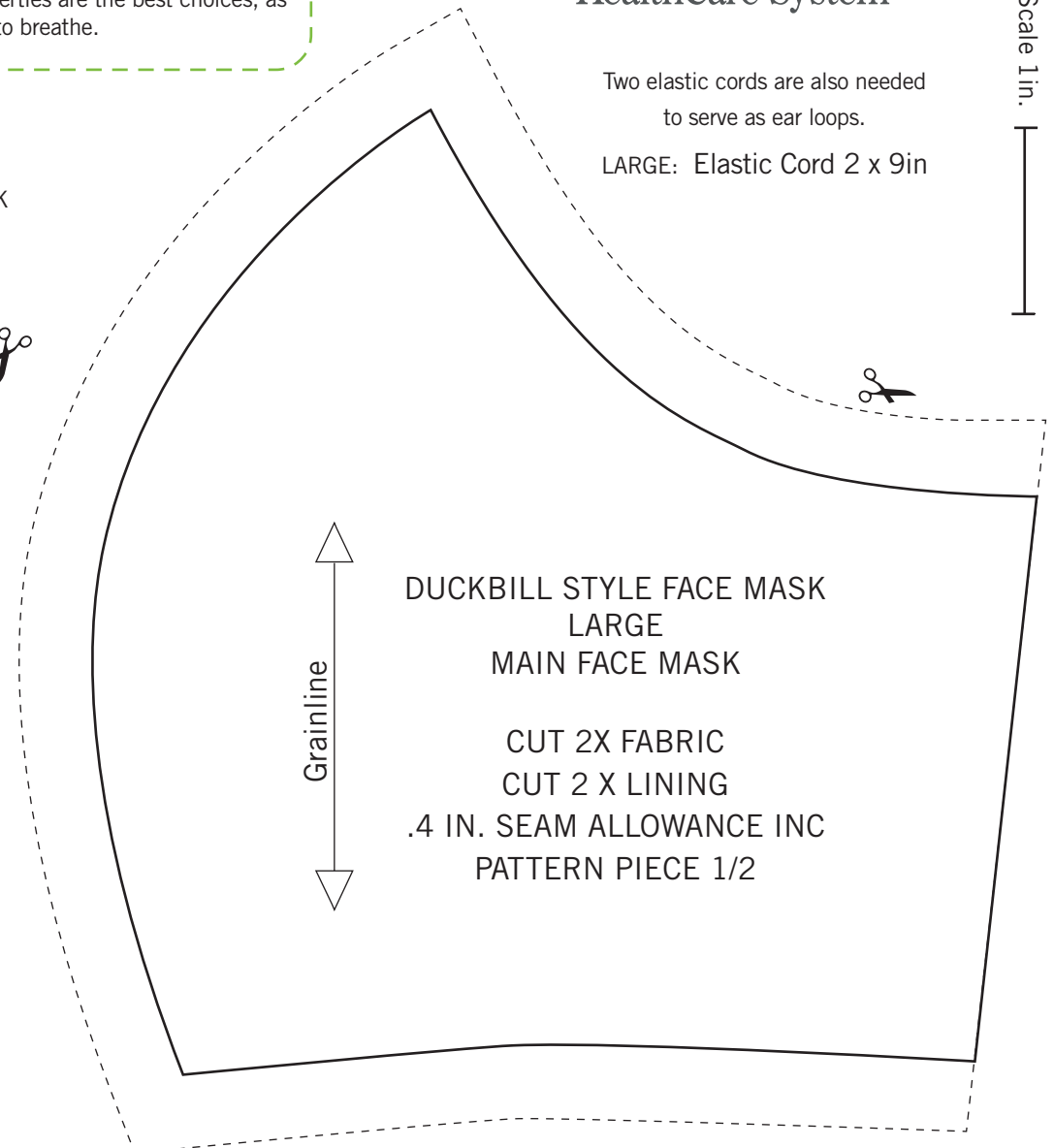
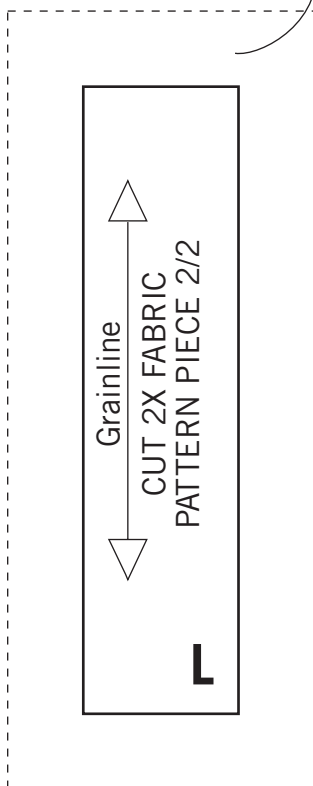
hillcrest
HealthCare System

Two elastic cords are also needed to serve as ear loops.

LARGE: Elastic Cord 2 x 9in

Scale 1in.

DUCKBILL STYLE FACE MASK
LARGE
BINDING FOR EDGES



DUCKBILL STYLE FACE MASK
LARGE
MAIN FACE MASK

CUT 2X FABRIC
CUT 2 X LINING
.4 IN. SEAM ALLOWANCE INC
PATTERN PIECE 1/2